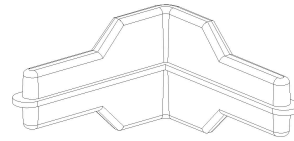
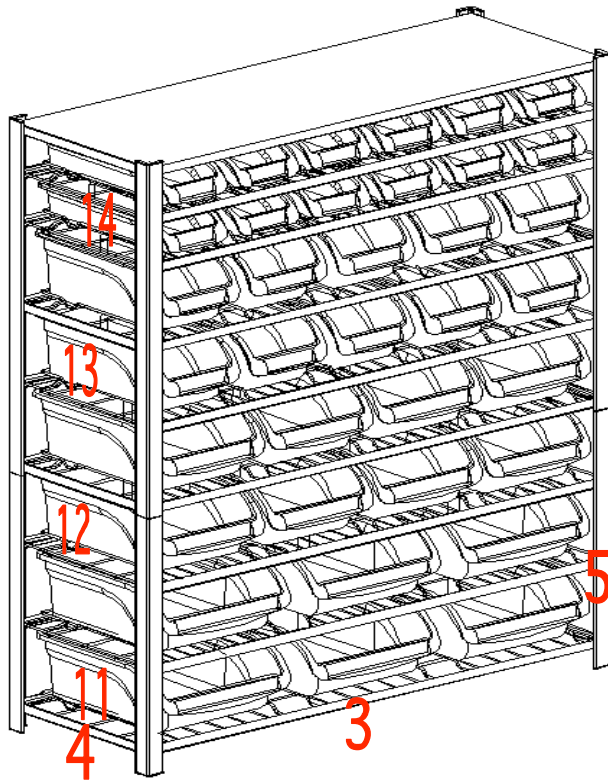
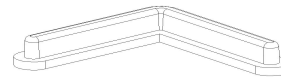


IF YOU ARE REQUIRED TO ORDER PARTS PLEASE USE THE LIST BELOW

MULTI-SIZE BIN RACK W/ WIRE DECK & MELAMINE TOP/BLACK WRINKLE



15



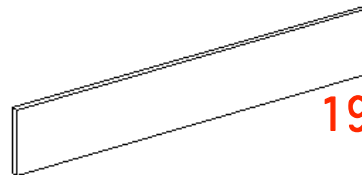
16



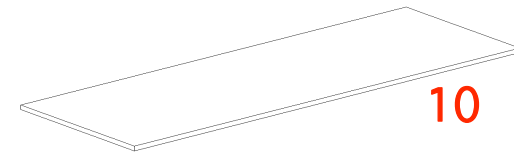
17



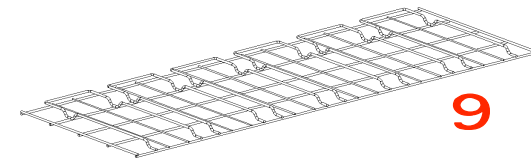
18



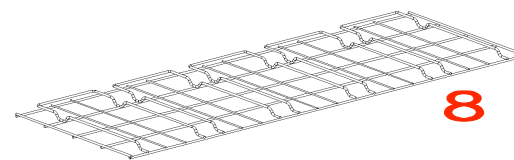
19



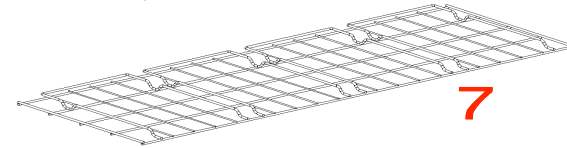
10



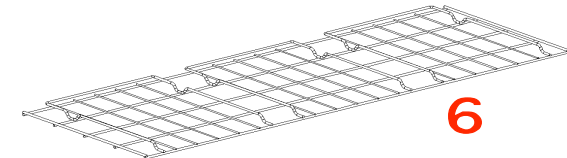
9



8



7



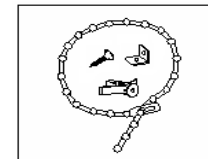
6

- WSBR-154457-WWD/MT/BW 1-LAP
- WSBR-154457-WWD/MT/BW 2-SAP
- WSBR-154457-WWD/MT/BW 3-LDRB
- WSBR-154457-WWD/MT/BW 4-SDRB
- WSBR-154457-WWD/MT/BW 5-SRB
- WSBR-154457-WWD/MT/BW 6-WDELB
- WSBR-154457-WWD/MT/BW 7-WDLB
- WSBR-154457-WWD/MT/BW 8-WDMB
- WSBR-154457-WWD/MT/BW 9-WDSB
- WSBR-154457-WWD/MT/BW 10-PBTP

- Long Angle Post
- Short Angle Post
- Long Double Rivet Beam
- Short Double Rivet Beam
- Single Rivet Beam
- Wire Deck for Extra Large Bins
- Wire Deck for Large Bins
- Wire Deck for Medium Bins
- Wire Deck for Small Bins
- PB Top Panel

- WSBR-154457-WWD/MT/BW 11-ELB
- WSBR-154457-WWD/MT/BW 12-LB
- WSBR-154457-WWD/MT/BW 13-MB
- WSBR-154457-WWD/MT/BW 14-SB
- WSBR-154457-WWD/MT/BW 15-PI
- WSBR-154457-WWD/MT/BW 16-PEC
- WSBR-154457-WWD/MT/BW 17-SLI
- WSBR-154457-WWD/MT/BW 18-MLI
- WSBR-154457-WWD/MT/BW 19-LLI
- WSBR-154457-WWD/MT/BW 20-TRH
- WSBR-154457-WWD/MT/BW 21-CH

- Extra Large Bin
- Large Bin
- Medium Bin
- Small Bin
- Post Inserts
- Post End Cap
- Small Label Insert
- Medium Label Insert
- Large Label Insert
- Tipping Restraint Hardware
- Complete Hardware



20